



AUGUST 2025

# Powering the Next Generation of Communications Technology

TSX:BYL | OTCQB:BYLTF

# Proven leader



Innovation in wireless communications is happening at a rapid pace



Baylin Technologies designs, builds, and implements hardware solutions that fuel the growth of wireless communications worldwide





Baylin is a radio frequency (RF) technology Original Equipment Manufacturer (OEM) with a 40-year history. We enable wireless communications with a focus on cellular antennas, embedded antennas, and high-power satellite communications.

**Headquarters** | Toronto, ON, Canada  
4 R&D Centres, 8 Sales Offices, 4 Manufacturing Centres



(TSX:BYL, OTCQB: BYLTF)

### **Satellite Connectivity**



### **Infrastructure Antennas**



### **Embedded Antennas**



## **Satellite Communications**

- Headquartered in Kirkland, Quebec
- Specializes in High Power Amplifiers, Converters, Transceivers, & Filters

## **Infrastructure**

- Led from Kanata, Ontario
- Specializes in Multibeam, Small Cells, Stadium, and In-Building Antenna products

## **Embedded Antennas**

- Headquartered in Tempe, Arizona
- Develops antennas for home automation, public safety, and automotive applications



# Satcom high power satellite communications

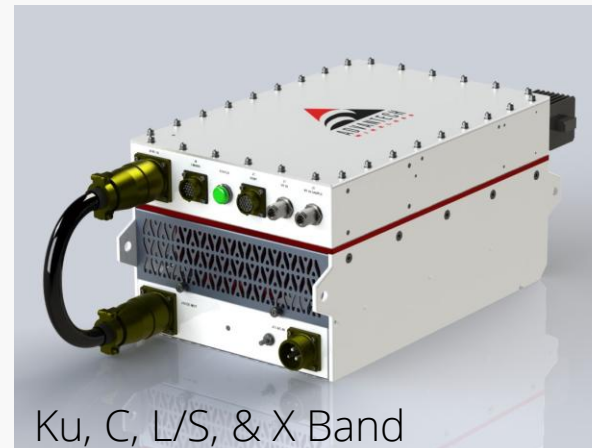
*We do not put things in space.*

*We do not make satellite dishes.*

**We engineer and manufacture high powered RF equipment which makes satellite communications work.**

## Example Uses:

- The NFL Super Bowl & the Masters golf tournament broadcasts are powered by AWT
- NASA's Artemis Space Mission – communication to the lunar modules are powered by AWT
- Multiple NATO government and space communications programs are powered by AWT



Ku, C, L/S, & X Band



Ka Band

# Wireless Infrastructure

## Key Facts:

- Sales across every major North American carrier
- Momentum breaking open European market
- Awarded small cell installations in Manhattan and all of NYC by two national infrastructure companies serving all major carriers
- Major Stadiums include multiple NFL, MLB, NHL, FIFA, major college, & NBA arenas
- Large and growing patent portfolio

## Competitive Differentiation



The **world's thinnest** DAS antenna – the patented HyperFlat®



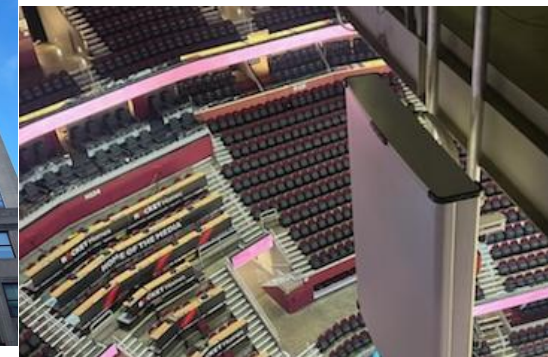
Mutibeam antennas that solve high customer density **at a fraction of the price of competition**



2" Diameter "Whip" Antennas which are **the standard for major metros such as NYC**



Stadium and Airports antennas **with world class performance**





# Embedded Antennas

When RF quality matters, we engineer and manufacture products which are embedded into our customer's end products for use by their customers.

## Consistency & Growth

Consistent profitability and margin attainment across a diversified customer base. Funnel of opportunities is substantial as the world further moves to wireless capabilities.

### Home Automation

Home & Enterprise Networking



### IOT

M2M Custom Engineered IOT



### Public Safety

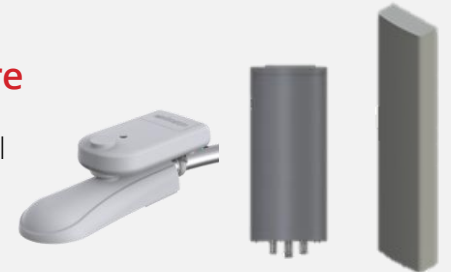
Land Mobile Radio (LMR)

Body Armor Cameras



### Embedded Infrastructure

Major OEM Small Cell & Macro



### Automotive

In vehicle wireless experience



# Sample Customer List

## Infrastructure Antennas



## Embedded Antennas



## Satellite Communications



## Distribution Partners



# Future Growth





# Future Growth

## Our Goal: \$100m w/\$10m in Adj EBITDA by 2026

### Key Facts:

- Infrastructure has carrier trials underway in Germany, the UK, and Portugal
- Embedded recently broke into the EU for home networking
- Revenue has grown from \$62.9m in '21 to \$83.6m in '24 with expected further growth
- Gross Margins have grown 28.9% in '21 to 41.5% in '24 with expected further improvement
- CEO has completed 17 successful acquisitions/divestitures in his career
- Baylin is evaluating acquisitions, but only if there is clarity in driving shareholder value
- Infrastructure launching new patented product family which 7 wireless carriers want trials for
- Satcom is launching new products to retire legacy, adding functionality while driving margin
- Baylin continues to add new customers (the EU, Private Wireless, etc.)
- Infrastructure has been growing business within existing logos at a rapid rate



New  
Markets



Organic Growth &  
Margin Expansion



Inorganic  
Growth (M&A)



New Products  
& Innovation



New Logos and  
Relationship Expansion

# Management Team



**Leighton Carroll**  
CEO and Director

Leighton was appointed CEO of Baylin in June 2021 and brings over 25 years of corporate technology leadership experience, including wireless network, engineering, and software development.



**John Dakas**  
VP Embedded  
Antenna Group

John joined the Company in April 2018 after a 29-year career at Nokia which included services at Alcatel Lucent and AT&T network systems.



**Whit Martin**  
VP Wireless Infrastructure

Whit joined the Company in 2018 after serving in various sales and marketing roles with companies including LGP Allgon, Powerwave Technologies, Hitachi and CellMax supporting sales of Antenna, Amplifier and RF Filter products in North and Central America.



**Cliff Gary**  
Chief Financial Officer

Cliff has a solid financial background working in a variety of corporate settings from start up to multinational companies operating in a multitude of locations including Magna, Sandvik and Arcelor Mittal. He is well versed in Baan (Infor) and ERP.



**John Restivo**  
President , Advantech  
Wireless

John is a 30-year leader in the Satcom Industry. John's career has included roles at Scientific-Atlanta, Radyne/Comstream and Paradise Datacom, a division of Teledyne Technologies.

# Board of Directors



**Jeffrey C. Royer** | Chairman

Mr. Royer is a private investor with interests in telecommunications, broadcasting, medical device manufacturing, hospitality, professional sports and real estate. Mr. Royer was a Director of Shaw Communications Inc. prior to its acquisition by Rogers and was a member of its Audit Committee. Mr. Royer is a General Partner of the Arizona Diamondbacks Baseball Club



**Harold Wolkin** | Vice-Chairman

Mr. Wolkin is an accomplished investment banker and financial analyst with over 35 years of experience. Mr. Wolkin was the managing director in the Diversified Industries Group of BMO Capital Markets and after that EVP and Head of Investment Banking for Dundee Capital Markets. He currently serves as a director of Diamond Estates Wines & Spirits Inc. and Plymouth Realty Capital Corp.



**Don Simmonds** | Director

Mr. Simmonds is an International Advisor to select corporate entities. He is the former Chairman and CEO of CTS (now known as YesTV). He was a founder of the Lenbrook Group in 1977, a private business incubation company best known for creating Clearnet Communications, one of Canada's leading wireless networks that was sold in 2001 to Telus Mobility. In 2008, Mr. Simmonds was inducted into the Canadian Telecommunications Hall of Fame.



**Bejoy Pankajakshan** | Director

Mr. Pankajakshan is Executive Vice President, Chief Technology and Strategy Officer at Mavenir Systems Inc., a privately-owned, multinational global telecoms vendor focused on software-based automated networks. An accomplished product and technology leader with a proven record of defining business vision and driving investments and acquisitions to realize long range growth, Mr. Pankajakshan adds valuable insight and industry experience to the board.



**Barry J. Reiter** | Lead Director

Mr. Reiter is a senior partner of Bennett Jones LLP, and acts as the Chair of both the Technology, Media & Entertainment Group and the Corporate Governance & Director Protection Group. His practice focuses on corporate governance, finance and development. Formerly a law professor at the Faculty of Law, University of Toronto, Mr. Reiter holds a Bachelor of Civil Law from Oxford University, an LLB from Osgoode Hall Law School.



**David Saska** | Director

Mr. Saska is a senior executive and technology leader. He previously served as the VP of Radio Access Network Engineering for AT&T where he worked for 25 years. Mr. Saska holds a Bachelor of Science in Electrical Engineering from Pennsylvania State University and continued his post graduate studies at Johns Hopkins University. Mr. Saska also serves on the Board of Quadgen Wireless Solutions.



**Janice Davis** | Director

Ms. Davis brings over 30 years of global experience from multiple industries. Prior to retirement, she served as the EVP, Business Transformation & Chief Supply Chain Officer at Shaw Communications. Earlier, she was VP & Chief Procurement Officer at Bombardier Aerospace, and Global Director of Electrical and Electronics Purchasing and Global Director of Supply in Business from Michigan State University and an MBA in Finance from Wayne State University.



**Leighton Carroll** | CEO and Director

Mr. Carroll was appointed CEO of Baylin in June 2021 and brings 25+ years of technology leadership experience. As president of QuadGen Wireless, he led the company to sustained growth and customer diversification, ultimately leading to its acquisition by MasTec. As CEO of Squan Holdings from 2014 to 2016, he successfully led the turnaround through acquisitions and a recapitalization. As CEO of Wireless Maritime Services, Mr. Carroll grew the company from a startup to the market leader for maritime communications. He worked with AT&T for 18 years in various executive roles. He is a graduate of Virginia Tech and has executive education from Harvard Business School, the Wharton Business School, and the MIT Sloan School of Business.

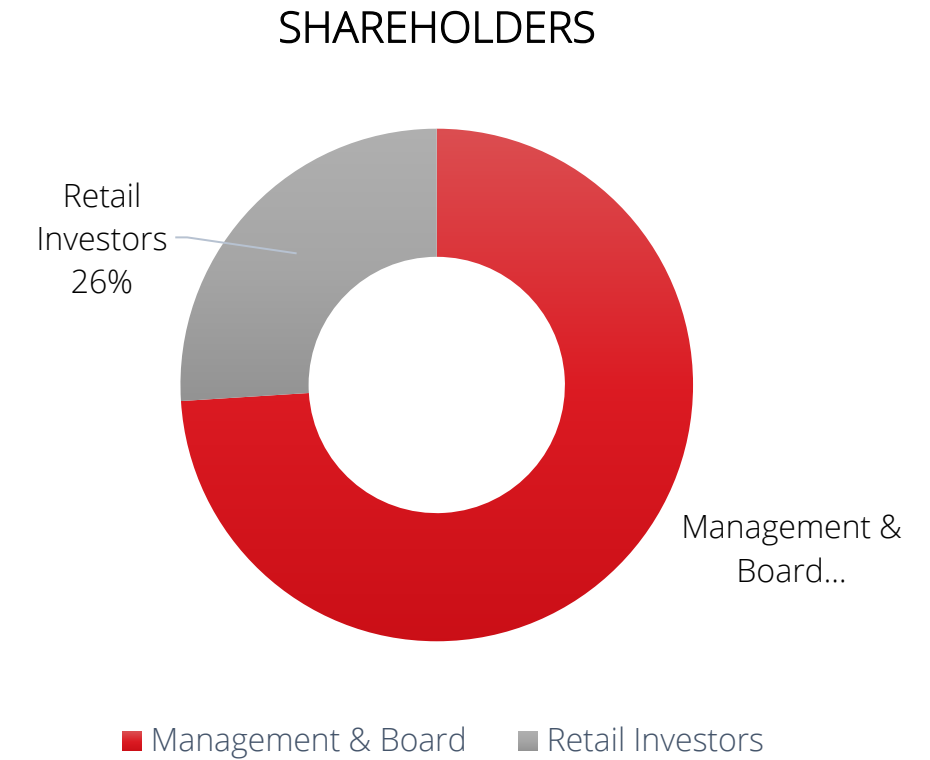


# Capital Structure

CAPITALIZATION	
Shares outstanding <sup>1</sup>	152.5 M
Options <sup>2</sup> (average exercise price CAD \$.30)	8.1 M
Share price <sup>2</sup>	CAD \$.29
Market cap <sup>2</sup>	\$44.0 M
Cash and Cash Equivalents <sup>1</sup>	\$4.3 M
Total Debt <sup>1</sup>	\$16.6 M
Enterprise Value	\$68.9 M
2024 Gross Margin	42%
2024 Revenues	\$83.6 M

<sup>1</sup> At June 30, 2025

<sup>2</sup> At August 19, 2025



A nighttime cityscape featuring a dense cluster of illuminated skyscrapers and a multi-lane highway in the foreground with long-exposure light trails from vehicles. Overlaid on the scene are several thin, white, curved lines that connect various points across the image, resembling a network or data flow diagram. The sky is a mix of deep blue and purple hues.

Thank **you.**

For more information,  
please contact:

**[investor.relations@baylitech.com](mailto:investor.relations@baylitech.com)**

TSX:BYL | OTCQB:BYLTF